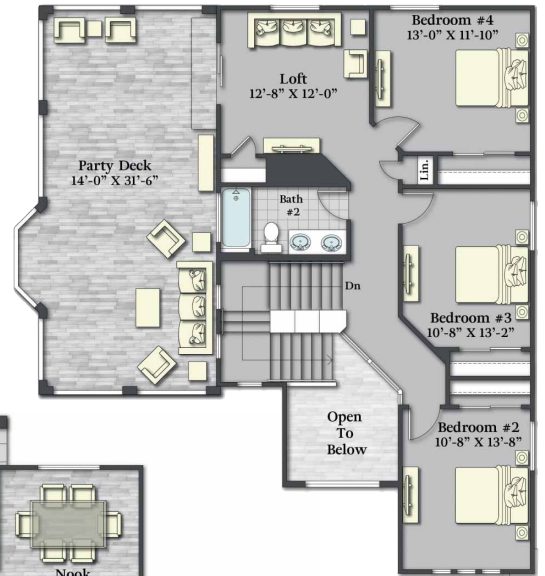


# Ava-IPD

With an eye towards the contemporary, the Ava-IPD exterior has a desert modern elevation. Featuring a spacious great room, captivating kitchen, and a welcoming entryway, this home is perfect for hosting social gatherings, or enjoying a cozy night in with your loved ones. The upstairs loft opens up to a beautiful party deck, which allows you to continue the festivities outside. The large patio slider doors in the great room and windows in the nook area flood the space with an abundance of natural light.

For your own personal retreat, the primary bedroom comes with a spa-like bathroom and walk-in closet. The Ava-IPD plan is ideal for anyone who values comfort and style.



Opt. Bedroom #5 ILO Study

TWO STORY

2,440 SQ FT

4 BEDROOM

2.5 BATH

2 CAR GARAGE

GREAT ROOM

NOOK / STUDY / LOFT

PARTY DECK

COVERED PORCH

COVERED PATIO

UTILITY ROOM

OPTIONAL

BEDROOM 5 ILO STUDY



10-17-23

SavannahAHomes.com

Savannah A Homes reserves the right to make changes or modifications to any our plans, specifications, materials, features, colors and/or pricing without notice. Square footages are approximate only measured and based on calculations from outside of exterior walls and include interior partition walls.